

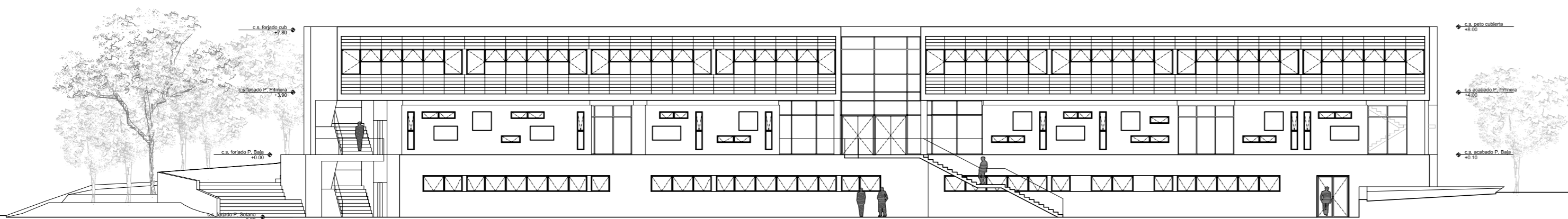
planta cota -3.90



planta cota +0.00



planta cota +3.90



alzado norte

- | | | |
|----------------------|-------------------|--|
| SECUNDARIA (ESO) | INSTALACIONES | |
| BACHILLER | JARDÍN | |
| ESP DOCENTES COMUNES | VIVIENDA CONSERJE | |
| ADMINISTRACIÓN | CIRCULACIONES | |