



CHAOTIC FAÇADE



ACCESSIBILITY



ROOF PROBLEMS



OBSOLETE SERVICES



INNER ALLEYS

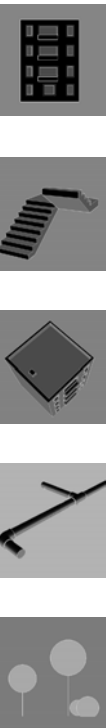
electrical wiring
balconies
AIR CONDITIONING
different window frames
multiplicity of elements
CLOTHES HANGING
sunshading

difficult access
NARROW STAIRCASE
mail boxes
NO ELEVATOR
slippery paving
handrail height

WATERPROOFING
lack of insulation
soil vent pipes
expansion joints
DRAINAGE
multiplicity of antennae

no mechanical rooms
no comply with regulations
WIRING ON VIEW
no gas supply
insufficient electrical supply
LACK OF VENTILATION

CUL-DE-SAC
traffic problems
SOCIAL CONFLICTS
lack of urban space
asphalt paving
lack of greenary





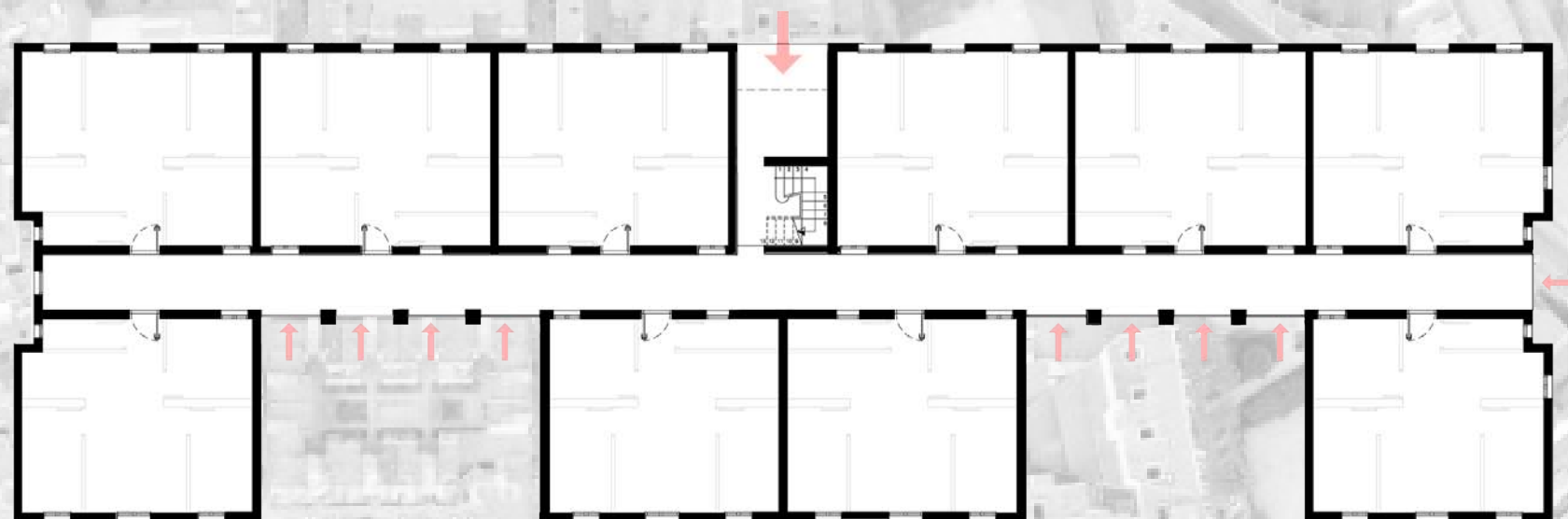
CHAOTIC FAÇADE

Each balcony has its own window frame, sunshading system, colour... There is no appropriate place for hanging clothes. Air conditioning machines are placed anywhere. Façade surface presents cracks and plaster is peeling off.





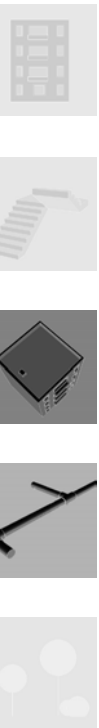
LIMITED ACCESS Each block has a single access with a narrow staircase for every 40 dwellings. There is no elevator, so elderly and handicapped living in the upper floors can hardly reach the street. Access into the block is uncontrolled. Each neighbour in the block has personalized walls and entry door in the access corridor.





LACK OF INSULATION

There was waterproofing problems due to aging of materials and not enough slope. Ducts ventilation didn't work properly due to its insufficient height. Antennae were old and anywhere. Access to the roof was complicated. There was no specific service rooms. Water and electrical counters are placed in cupboards on the corridors. Wiring materials were obsolete and infradimensioned.





SOCIAL PROBLEMS Due to the fact of being a cul-de-sac typology it enhanced problems of different nature. Drug consumption and dealing, waste accumulation, noise at nights affecting neighbours on the ground floor dwellings. Abandoned parked cars. Direct access from the alley to the blocks.

